



# **Kestronics Ltd.**

*Developing innovative solutions*

[sales@kestronics.co.uk](mailto:sales@kestronics.co.uk)

- **Batteries for all kinds of Handheld Terminals, Printers and Barcode Readers**
- **Money Handling / Counterfeit Detectors**
- **Magnetic Card Readers / Writers**
- **Smart Card Readers / Writers**
- **Portable Swipe Card Readers**
- **Thermal Printheads**
- **Barcode Scanners / Readers**
- **OEM Barcode Modules**
- **Signature Pads**
- **Handheld Terminals / PDA**
- **Chip and Pin Terminals**
- **Mifare and RFID Readers / Writers**
- **POS Printers and Consumables**
- **Portable Printers and Consumables**
- **Label Printers and Consumables**
- **Kiosk Printers and Consumables**
- **Loyalty Card Printer and Consumables**
- **Plastic Card Printer and Consumables**
- **Industrial Keyboards / Trackball**
- **Visitor Management System**



Tel: +44 (0) 1727 812222  
Fax: +44 (0) 1727 811920

Url: [www.kestronics.co.uk](http://www.kestronics.co.uk)  
Buy Online: [www.kestronics.com](http://www.kestronics.com)

Kestronics Ltd.  
Unit 26 North Orbital Commercial Park  
Napsbury Lane  
St Albans  
AL1 1XB  
United Kingdom

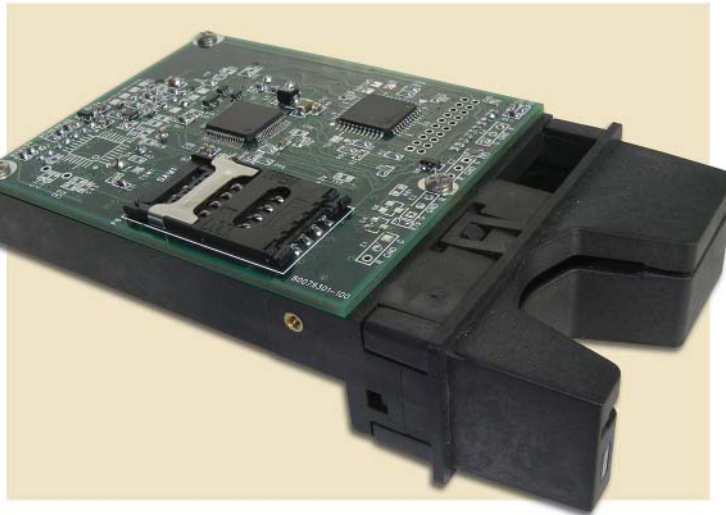
SPECTRUM™ III

# COMPACT INSERT READER

Hybrid Intelligent OEM Module

for Magnetic Stripes and/or Smart Cards

RS-232, RS-232 PC/SC, USB-CDC, and USB PC/SC Interfaces



ID TECH's newest manual insert reader, the Compact Spectrum III, is one of the few readers in the industry that couples smart card and magnetic stripe reading capabilities into a compact solution. Available in RS232, RS-232 PC/SC, USB-CDC, and USB PC/SC interfaces, the Compact Spectrum III is a perfect fit for applications where space is at a premium, such as portable devices, handheld terminals or kiosks.

## Reads Magnetic Stripes

The Compact Spectrum III reliably reads up to three tracks of information on media conforming to ISO 7810 and 7811 standards. With its magchip technology, our compact reader provides strong and consistent reads, even in situations where jitter and drop out cards are normally a factor.

## Reads Smart Cards

The landing style contacts of the Compact Spectrum III allow the hybrid insert reader to dependably read and write to Integrated Circuit Cards (ICC), memory cards and microprocessor cards that conform to ISO 7816 standards. The reader supports a SAM slot on the PCA with the option of an external SAM board for up to 4 SAMs which provides extra security.

## Reliable and Versatile

With a minimum of 1,000,000 life cycles for both magnetic and smart card reading capabilities, the Compact Spectrum III is an ideal choice for demanding OEM applications. Its swipe speed of 3 to 50 inches per second offers one of the industry's widest swipe speed ranges ensuring excellent first-time read capability and its debris slot allows foreign material to fall out without obstructing the performance of the reader.

## Features:

- 1,000,000 card passes minimum for both magnetic stripe and smart card reads
- Excellent read performance even on warped or bowed cards
- Small profile and footprint
- Landing style contacts ensure long life
- Reads tracks 1, 2, 1&2, 2&3 or 1&2&3
- Wide swipe speed range - 3 to 50 inches per second
- 1 to 5 optional SAM slots available
- Debris slot

**IDTECH**<sup>®</sup>  
Value through Innovation

# Spectrum™ III Compact Hybrid Insert Reader Specifications

## Electrical

RS-232: +5 VDC/70mA\* (power adapter regulated 5 VDC/500mA or equivalent).  
 USB: +5 VDC/70mA power supplied by the host computer.  
 Operating Current: 70 mA maximum for three tracks of magnetic data.  
 Chassis Ground: Connected to GND and magnetic head case.

\*Without smart card options.

## Environmental

Operating Temperature: 32° F to 131° F (0° C to 55° C).  
 Storage Temperature: -40° F to 158° F (-40° C to 70° C).  
 Humidity: Maximum 95% non-condensing.

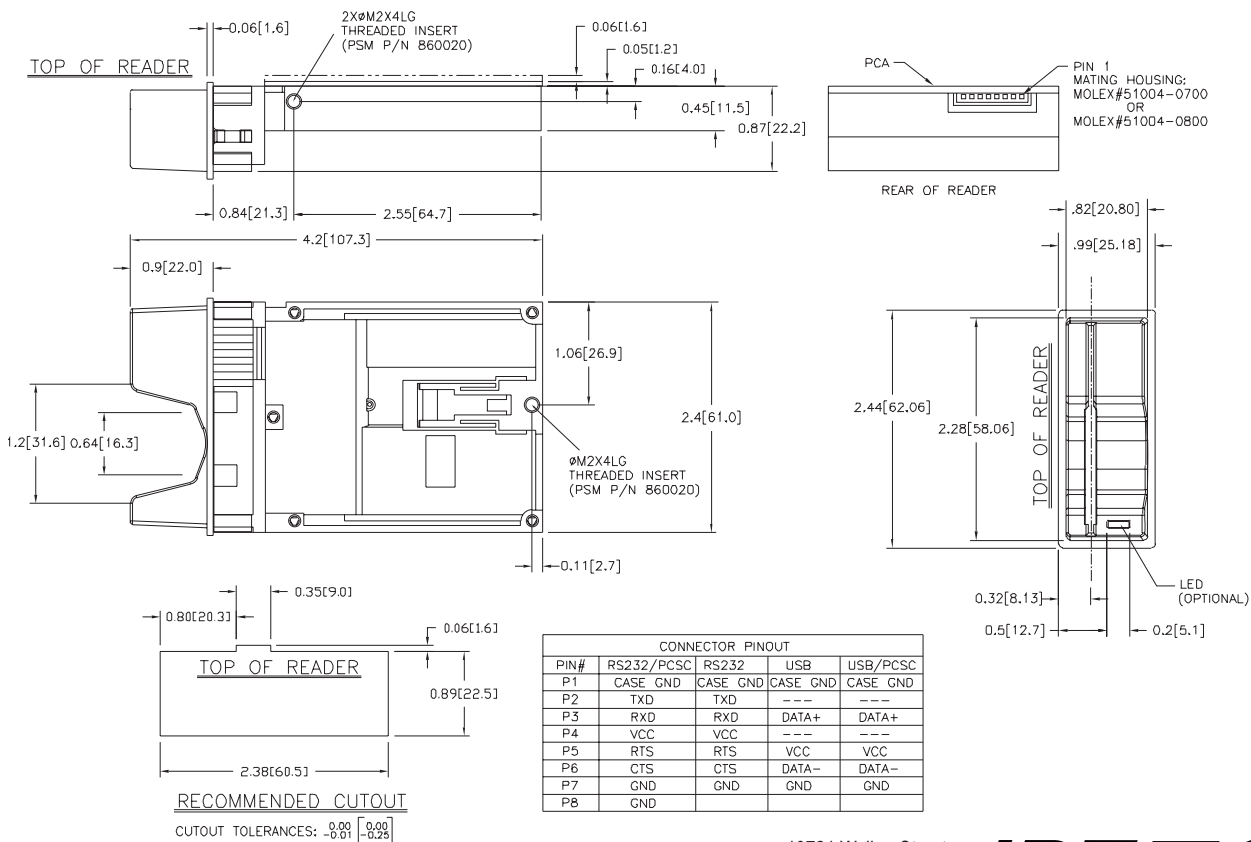
## Reliability

Magnetic Head Life: 1,000,000 cycles minimum.\*  
 IC Card Connector: 1,000,000 cycles minimum.\* Contacts are gold-plated and exceed EMV life requirements for minimum resistance over the life of the reader.  
 Chassis and Bezel: 1,000,000 card cycles minimum.\*  
 Warranty: One year, parts and labor.

\*All wear reliability numbers are based on operation in a benign environment.

## Mechanical

Magnetic Stripe Formats: ISO 7811, F2F. Media with magnetic coercivity of 300 through 4,000 Oersted can be read.  
 Reading Speed: 3 to 50 inches per second.  
 Media Thickness: .025 to .035 inches. Maximum card thickness .035 inches.  
 Dimensions: **Compact Bezel** Length: 4.2 inches (107.3 mm). Width: 2.5 inches (63 mm). Height: .87 inches (22.2 mm).  
 Features & Options: Security Access Module (SAM) socket, LED Indicators, Card Seated Sensor, Card Present Sensor.  
 Insert Reader Footprint:



10721 Walker Street  
 Cypress, California 90630  
 (714) 761-6368 Fax: (714) 761-8880  
 Visit us at [www.idtechproducts.com](http://www.idtechproducts.com)  
**ISO 9001-2000 Certified**

**IDTECH**®  
 Value through Innovation